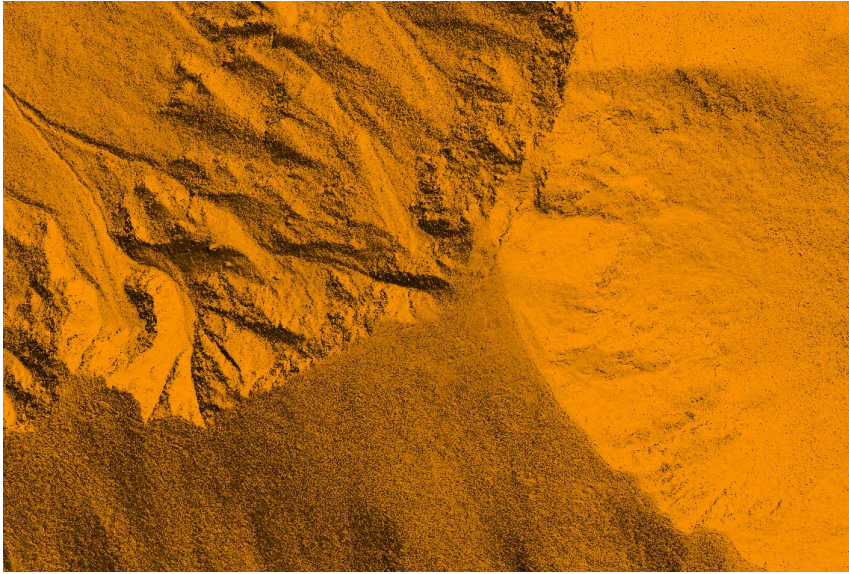


Snow management based on a digital ground model

Digital terrain models by Lidar data acquisition



📍 Tirol, Austria
👤 Trigonos ZT GmbH,
Schwatz, Austria
🕒 Sep 2016 - Jan 2017

Expertise

3D Mapping, Airborne
Laserscanning,

In autumn 2016 during the snow-free period, terrain models for 10 subareas of the Tirolean Cable Cars were produced as the basis for snow management in winter and for other planning purposes. Snow management is based on such a digital terrain model: snow groomers can determine their precise position and height above the terrain model – the difference between the shield of the vehicle and the terrain model represents the snow thickness. This allows for optimised slope management and significant cost savings. The same terrain model is also employed as the basis for the planning of construction projects in the entire ski region.

Services

- ◆ Project management
- ◆ Flight planning
- ◆ Airborne Laserscanning
- ◆ Geo referencing, Classification of Lidar data
- ◆ Computation of digital terrain and surface model
- ◆ Technical documentation