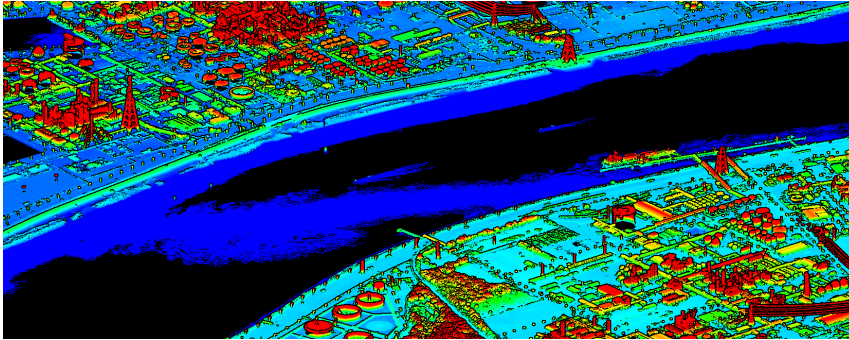


LiDAR acquisition of the Scheldt river in Flanders

Lidar data acquisition of the Scheldt estuary in Antwerp.



- 📍 Antwerp, Belgium
- 👤 De Vlaamse Waterweg nv
- 🕒 since 2023

bsf_expertise

Airborne Laserscanning, 3D Mapping

New heights reached! In the spring of 2023, BSF Swissphoto reached a pivotal milestone, utilizing our cutting-edge Riegl VQ780II-S LiDAR scanner to expertly map a significant 112 km² section of the iconic Scheldt river. This encompassed the sprawling expanse of Europe's second-largest port, Antwerp. During low tide, we captured a comprehensive point cloud with a minimum point density of 8 points per square meter, ensuring a remarkable accuracy of 5 cm in elevation and 10 cm in position. Our meticulously acquired and processed data has been entrusted to our esteemed client, 'De Vlaamse Waterweg nv', empowering them to meticulously monitor and manage this vital waterway. At BSF Swissphoto we are already busy preparing to surpass this successful project again next year. Together we will continue to push the boundaries of precision and reliability!